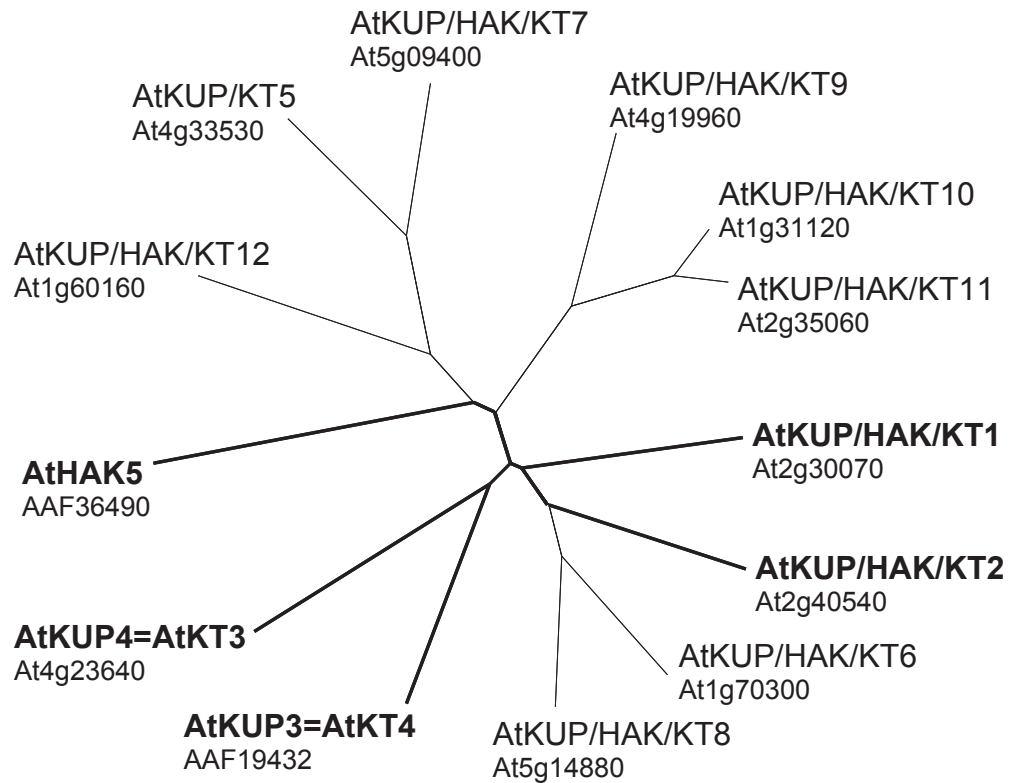


Phylogenetic tree of *A. thaliana* KUP/HAK/KT transporters



Proteins for which the complete cDNA has been sequenced are printed in bold and are marked with bold lines. We are using the name AtKUP/HAK/KT except for four cases with conflicting numbers: The names AtKT5 (Quintero and Blatt, 1997) and AtHAK5 (Rubio et al., 2000) have been given to different genes while AtKUP3 (Kim et al., 1998) and AtKT4 (Quintero and Blatt, 1997) have been used for the same gene; and so were AtKUP4 and AtKT3. Furthermore, AtKUP4=AtKT3 corresponds to the *trh1* gene (Rigas et al., 2001).